

You Have eMail!



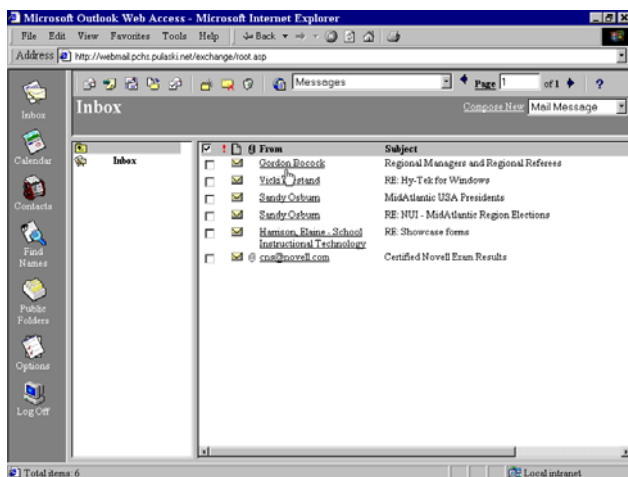
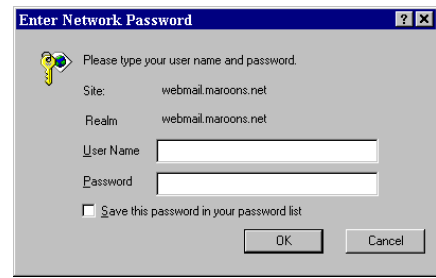
Below are the basic instructions for using the system from at home or from school. We hope you enjoy using the system.

To access Webmail (from home or school) start your Internet browser and enter the URL: <http://student.webmail.pulaski.net/>. You will get the following screen...

In the “Log On” window type your **username** and press enter.

In the User Name window type **pulaskiusername**.

The password should be your usual school network password.



When you have successfully logged in, you will see this screen.

From here you can read and send e-mail. Keep track of calendar events. Find the names of other users as they are on the system. Have fun, but remember; you were given a behavioral code that gives you rules for using the system. If you violate the rules you won't use the system!!!

Your e-mail address **username@stu.pulaski.k12.ky.us**

Example: 10gargar@stu.pulaski.k12.ky.us